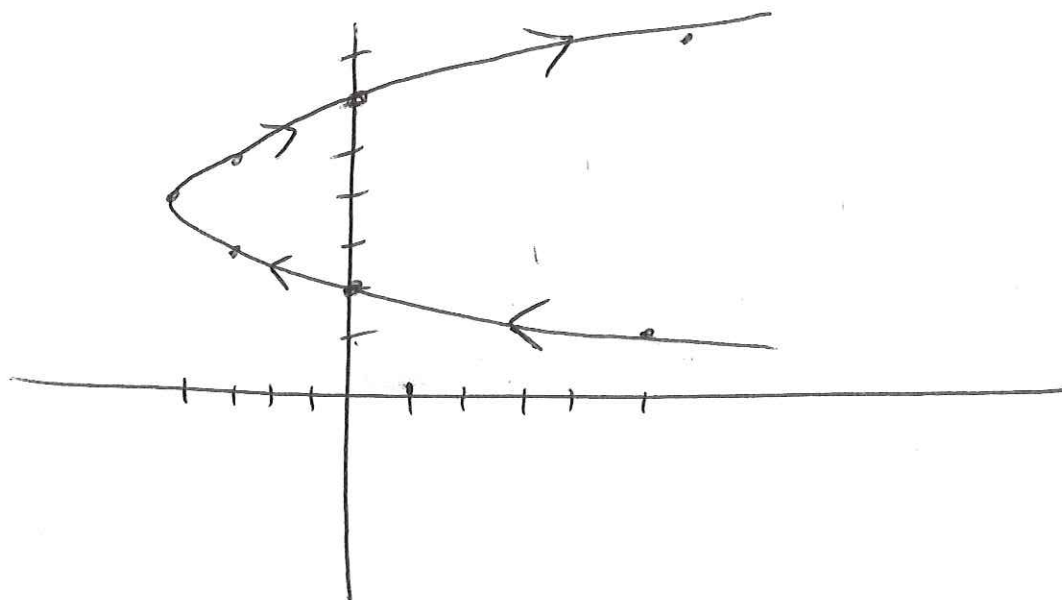


10.1

#2

t	$x = t^2 - 4t$	$y = t + 2$
-2	12	0
-1	5	1
0	0	2
1	-3	3
2	-4	4
3	-3	5
4	0	6
5	5	7
6	12	8



2b)

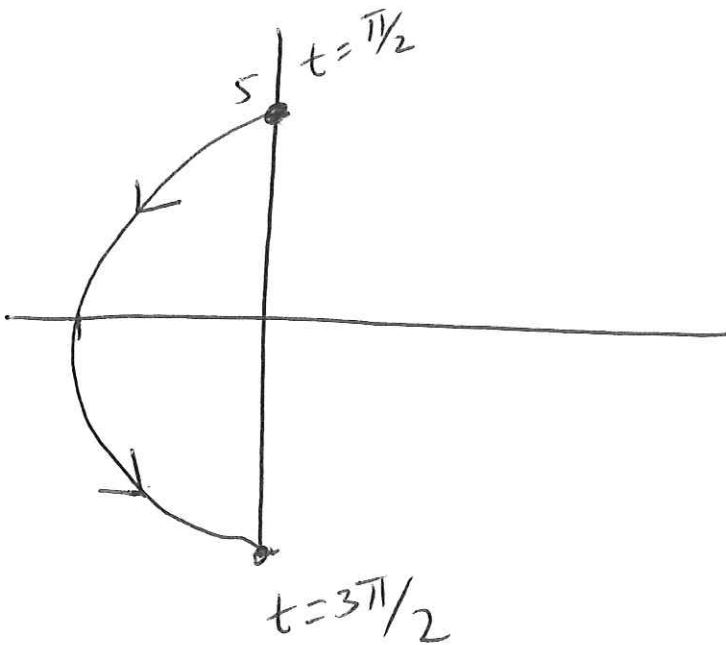
$$x = 5 \cos \theta$$

$$y = 5 \sin \theta$$

$$\left(\frac{x}{5}\right)^2 + \left(\frac{y}{5}\right)^2 = 1 \rightarrow x^2 + y^2 = 25$$

Since $\frac{\pi}{2} \leq \theta \leq \frac{3\pi}{2}$ only part of the circle

is swept.



2c)

$$x = 5 \cos \theta$$

$$y = 3 \sin \theta$$

$$\frac{x}{5} = \cos \theta$$

$$\frac{y}{3} = \sin \theta$$

$$\left(\frac{x}{5}\right)^2 + \left(\frac{y}{3}\right)^2 = 1$$

$$\frac{\pi}{2} \leq \theta \leq \frac{3\pi}{2}$$

