

MATH 409

Advanced Calculus I

Lecture 6:

Functions.

Countable and uncountable sets.

Functions

A **function** (or **map**) $f : X \rightarrow Y$ is an assignment: to each $x \in X$ we assign an element $f(x) \in Y$.

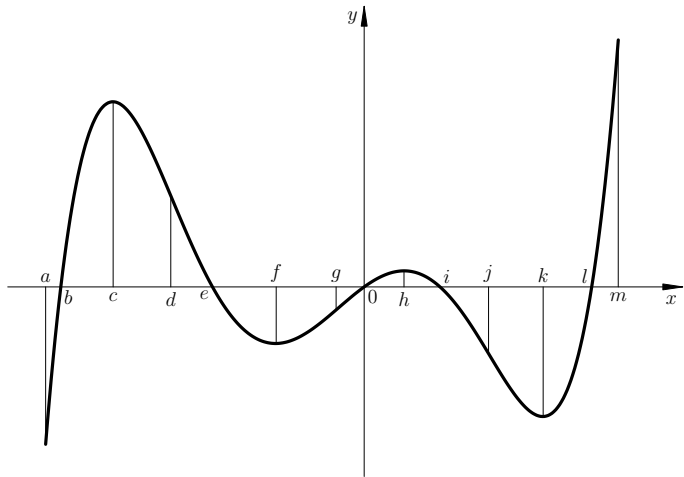
Definition. A function $f : X \rightarrow Y$ is **injective** (or **one-to-one**) if $f(x') = f(x) \implies x' = x$.

The function f is **surjective** (or **onto**) if for each $y \in Y$ there exists at least one $x \in X$ such that $f(x) = y$.

Finally, f is **bijective** if it is both surjective and injective. Equivalently, if for each $y \in Y$ there is exactly one $x \in X$ such that $f(x) = y$.

Suppose we have two functions $f : X \rightarrow Y$ and $g : Y \rightarrow X$. We say that g is the **inverse function** of f (denoted f^{-1}) if $y = f(x) \iff g(y) = x$ for all $x \in X$ and $y \in Y$.

Theorem The inverse function f^{-1} exists if and only if f is bijective.



Definition. The **composition** of functions $f : X \rightarrow Y$ and $g : Y \rightarrow Z$ is a function from X to Z , denoted $g \circ f$, that is defined by $(g \circ f)(x) = g(f(x))$, $x \in X$.

$$X \xrightarrow{f} Y \xrightarrow{g} Z$$

Properties of compositions:

- If f and g are one-to-one, then $g \circ f$ is also one-to-one.
- If $g \circ f$ is one-to-one, then f is also one-to-one.
- If f and g are onto, then $g \circ f$ is also onto.
- If $g \circ f$ is onto, then g is also onto.
- If f and g are bijective, then $g \circ f$ is also bijective.
- If f and g are invertible, then $g \circ f$ is also invertible and $(g \circ f)^{-1} = f^{-1} \circ g^{-1}$.
- If id_Z denotes the identity function on a set Z , then $f \circ \text{id}_X = f = \text{id}_Y \circ f$ for any function $f : X \rightarrow Y$.
- For any functions $f : X \rightarrow Y$ and $g : Y \rightarrow X$, we have $g = f^{-1}$ if and only if $g \circ f = \text{id}_X$ and $f \circ g = \text{id}_Y$.

Cardinality of a set

Definition. Given two sets A and B , we say that A is of the same **cardinality** as B if there exists a bijective function $f : A \rightarrow B$. Notation: $|A| = |B|$.

Theorem The relation “is of the same cardinality as” is an equivalence relation, i.e., it is reflexive ($|A| = |A|$ for any set A), symmetric ($|A| = |B|$ implies $|B| = |A|$), and transitive ($|A| = |B|$ and $|B| = |C|$ imply $|A| = |C|$).

Proof: The identity map $\text{id}_A : A \rightarrow A$ is bijective. If f is a bijection of A onto B , then the inverse map f^{-1} is a bijection of B onto A . If $f : A \rightarrow B$ and $g : B \rightarrow C$ are bijections then the composition $g \circ f$ is a bijection of A onto C .

Countable and uncountable sets

A nonempty set is **finite** if it is of the same cardinality as $\{1, 2, \dots, n\} = [1, n] \cap \mathbb{N}$ for some $n \in \mathbb{N}$. Otherwise it is **infinite**.

An infinite set is called **countable** (or **countably infinite**) if it is of the same cardinality as \mathbb{N} . Otherwise it is **uncountable** (or **uncountably infinite**).

An infinite set E is countable if it is possible to arrange all elements of E into a single sequence (an infinite list) x_1, x_2, x_3, \dots . The sequence is referred to as an **enumeration** of E .

Countable sets

- $2\mathbb{N}$: even natural numbers.

Bijection $f : \mathbb{N} \rightarrow 2\mathbb{N}$ is given by $f(n) = 2n$.

- $\mathbb{N} \cup \{0\}$: nonnegative integers.

Bijection $f : \mathbb{N} \rightarrow \mathbb{N} \cup \{0\}$ is given by $f(n) = n - 1$.

- \mathbb{Z} : integers.

Enumeration of all integers: $0, 1, -1, 2, -2, 3, -3, \dots$

Equivalently, a bijection $f : \mathbb{N} \rightarrow \mathbb{Z}$ is given by $f(n) = n/2$ if n is even and $f(n) = (1 - n)/2$ if n is odd.

- $E_1 \cup E_2$, where E_1 is finite and E_2 is countable.

First we list all elements of E_1 . Then we append the list of all elements of E_2 . If E_1 and E_2 are not disjoint, we also need to avoid repetitions in the joint list.

Countable sets

- $E_1 \cup E_2$, where E_1 and E_2 are countable.

Let x_1, x_2, x_3, \dots be an enumeration of E_1 and y_1, y_2, y_3, \dots be an enumeration of E_2 . Then $x_1, y_1, x_2, y_2, \dots$ enumerates the union (maybe with repetitions).

- Infinite set $E_1 \cup E_2 \cup \dots$, where each E_n is finite.

First we list all elements of E_1 . Then we append the list of all elements of E_2 . Then we append the list of all elements of E_3 , and so on... (and do not forget to avoid repetitions).

- $\mathbb{N} \times \mathbb{N}$: pairs of natural numbers
- \mathbb{Q} : rational numbers
- Algebraic numbers (roots of nonzero polynomials with integer coefficients).

Theorem (Cantor) The set \mathbb{R} is uncountable.

Proof: It is enough to prove that the interval $(0, 1)$ is uncountable. Assume the contrary. Then all numbers from $(0, 1)$ can be arranged into an infinite list x_1, x_2, x_3, \dots . Any number $x \in (0, 1)$ admits a decimal expansion of the form $0.d_1d_2d_3\dots$, where each $d_i \in \{0, 1, \dots, 9\}$. In particular,

$$x_1 = 0.d_{11}d_{12}d_{13}d_{14}d_{15}\dots$$

$$x_2 = 0.d_{21}d_{22}d_{23}d_{24}d_{25}\dots$$

$$x_3 = 0.d_{31}d_{32}d_{33}d_{34}d_{35}\dots$$

.....

Now for any $n \in \mathbb{N}$ choose a decimal digit \tilde{d}_n such that $\tilde{d}_n \neq d_{nn}$ and $\tilde{d}_n \notin \{0, 9\}$. Then $0.\tilde{d}_1\tilde{d}_2\tilde{d}_3\dots$ is the decimal expansion of some number $\tilde{x} \in (0, 1)$. By construction, it is different from all expansions in the list. Although some real numbers admit two decimal expansions (e.g., $0.50000\dots$ and $0.49999\dots$), the condition $\tilde{d}_n \notin \{0, 9\}$ ensures that \tilde{x} is not such a number. Thus \tilde{x} is not listed, a contradiction.

Uncountable sets

- Any interval (a, b) is of the same cardinality as $(0, 1)$.

Bijection $f : (0, 1) \rightarrow (a, b)$ is given by $f(x) = (b - a)x + a$.

- All intervals of the form (a, b) have the same cardinality.

Follows by transitivity since they are all of the same cardinality as $(0, 1)$.

- All intervals of the form (a, ∞) or $(-\infty, a)$ are of the same cardinality as $(0, \infty)$.

Bijection $f : (0, \infty) \rightarrow (a, \infty)$ is given by $f(x) = x + a$.

Bijection $f : (0, \infty) \rightarrow (-\infty, a)$ is given by $f(x) = -x + a$.

Uncountable sets

- $(0, 1)$ is of the same cardinality as $(1, \infty)$.

Bijection $f : (0, 1) \rightarrow (1, \infty)$ is given by $f(x) = x^{-1}$.

- $(0, \infty)$ is of the same cardinality as \mathbb{R} .

Bijection $f : \mathbb{R} \rightarrow (0, \infty)$ is given by $f(x) = e^x$.

- $[0, 1]$ is of the same cardinality as $(0, 1)$.

Let x_1, x_2, x_3, \dots be a sequence of distinct points in $(0, 1)$, say, $x_n = (n+1)^{-1}$ for all $n \in \mathbb{N}$. Then a bijection $f : [0, 1] \rightarrow (0, 1)$ is defined as follows: $f(0) = x_1$, $f(1) = x_2$, $f(x_n) = x_{n+2}$ for all $n \in \mathbb{N}$, and $f(x) = x$ otherwise.